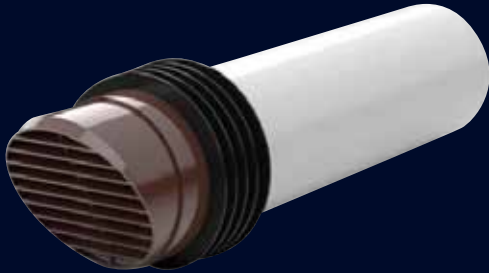


High Rise Cavity Wall Kit

Ø100mm x 400mm rigid duct



MODELS

Colour	Colour – Brown (RAL 8017)
Size	Size available - Ø100 mm

KEY FEATURES

- Ideal for high rise applications
- Suitable for products using a Ø100 mm connection
- Complete kit for quick & easy installation
- Durable rigid duct suitable for cavity installation
- Attractive brown grille
- Cost effective for high rise installations

High Rise Cavity Wall grille is manufactured from high impact polystyrene and rigid PVCu (Unplasticized Polyvinyl Chloride) with a rubber finned seal. The High Rise Cavity Wall grille has minimum free area of 6,499 mm².

This kit will enable the connection of Airflow products using a Ø100mm connection.

The High Rise Cavity Wall grille is manufactured in compliance with Domestic Plastic Ductwork Specification DW/154 and does meet UL94HB flammability standard.

This is not to be used within new builds over 18 m, if unsure please liaise with your local building control.

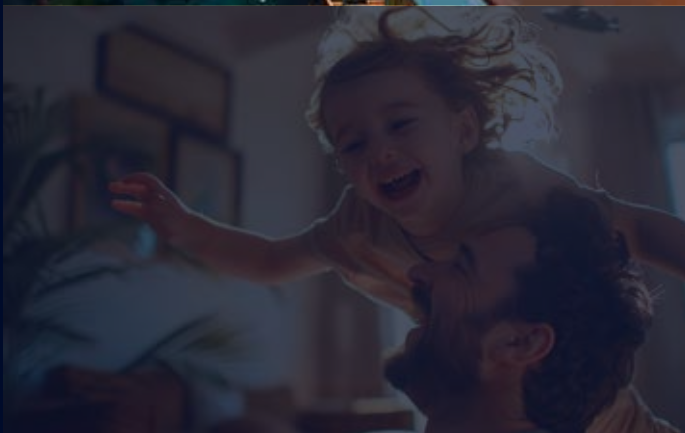
INSTALLATION

These High Rise Cavity Wall Grilles can be fitted from inside the building through exterior walls, to ease installation.

Once the exit position is determined, a core drill is used to drill a round hole through the wall, approx. 117 mm diameter and the High Rise Cavity Wall Grille is pushed through the hole from the inside, until the first flipper on the seal clears the outside wall surface.

The inner tube of the High Rise Cavity Wall Grille is then gently pulled back into the room, so that all the flippers on the multi-fin seal are flipped over and curve towards the outside wall and until the first flipper on the seal is also curved outwards and in good contact with the brickwork.

This will mean that all 5 flippers are orientated in the same way and in good contact with the inside surface of the drilled brickwork.

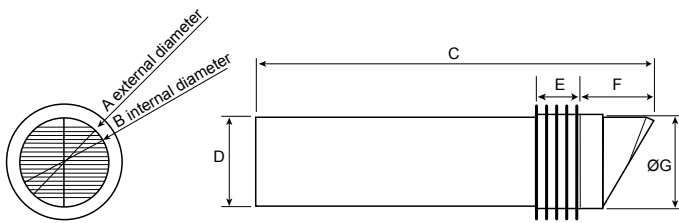


TECHNICAL DATA

Specification	High rise cavity wall kit
Max airflow (m³/h / l/s)	432 / 120
Material	Polystyrene/PVCu
Grille colour	Brown (RAL 8017)
Min temperature (°C)	-15
Max temperature (°C)	60
Min free area (mm²)	6,499
Internal diameter (mm)	Ø100
External diameter (mm)	Ø103.2
Length (mm)	400
Weight (g)	415
Part number	9021451
EAN	5019009304120

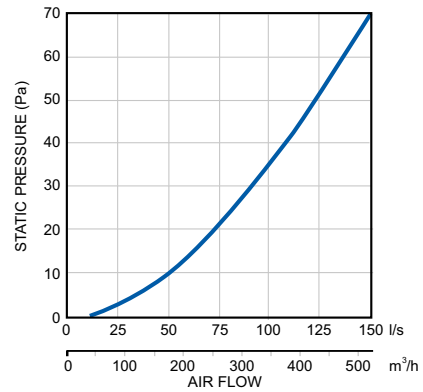
Airflow (m³/h / l/s)	Resistance (Pa)
29 / 8	0.04
47 / 13	0.35
76 / 21	1.8
108 / 30	4.2
216 / 60	15
432 / 120	48

DIMENSIONS

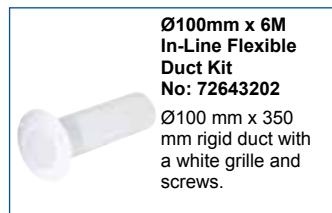


A	B	C	D	E	F	G
Ø100 mm	Ø103.2 mm	416 mm	103.2 mm	50 mm	86 mm	Ø180 mm

PERFORMANCE



ACCESSORIES



Others products available from airflow.com

Call: 01494 525252

Visit: airflow.com



Airflow Developments Limited
Aidelle House, Lancaster Road,
Cressex Business Park,
High Wycombe, Buckinghamshire,
United Kingdom, HP12 3QP

E-mail: info@airflow.com
Telephone: +44 (0) 1494 525252

airflow.com

© Airflow Developments Limited. Airflow Developments Limited reserve the right, in the interests of continuous development, to alter specifications without prior notice. All orders are accepted subject to our conditions of sale which are available on request



80001667 Issue 1 12/2024